

## BIM FOR CMS & GCS

- ▶ VISUALIZATION  
CONSTRUCTABILITY  
QUANTITY TAKE-OFF ..... DESIGN TO COST
- ▶ CLASH DETECTION  
COORDINATION  
LEAN CONSTRUCTION
- ▶ SITE LOGISTICS  
SAFETY PLANNING  
4D SCHEDULING



# focus

2009 WILL BE THE “YEAR OF THE CONTRACTOR” IN BIM

—MCGRAW HILL SMARTMARKET REPORT ON BIM

*As recognition of the benefits of BIM grows, the ability of design professionals, contractors, fabricators and suppliers to work effectively in this new environment will increasingly become a competitive differentiator in winning work. In challenging economic times, this kind of edge can be critically important to survival.*

## Helping you achieve your BIM goals

Building Information Modeling—or BIM—is an emerging technology platform for building design and construction which will substantially change the processes and economics for designing and constructing facilities. BIM promises value to CMs and GCs at many levels. It offers wide ranging competitive advantages from better visualization and coordination, substantially reduced RFIs and change orders, cost savings from lean construction and shorter schedules.

Accumulating evidence affirms that BIM models for design and construction save money and time on projects and are a good return on investment. However, the full value of BIM can only be realized if a coherent framework is established with clear guidelines so that all stakeholders (the Owner as well as its Consultants, Contractors and Suppliers) can collaborate to maximize the value from BIM. Substantial planning, preparation and training are required to realize the full benefit of the new BIM platform.

Benchmark Line and Grade, Inc. has been providing BIM consulting services to Owners and Construction Managers over the last several years. Let us show you how we can help! Put us on your BIM team.

## MARKET WATCH

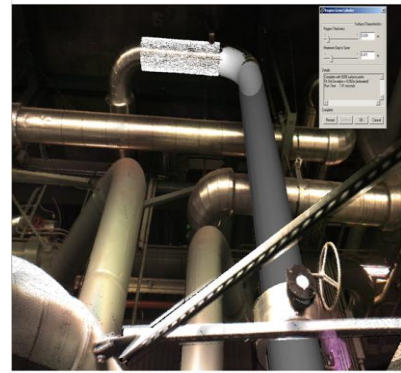
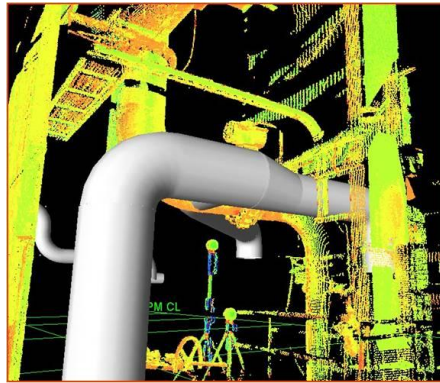
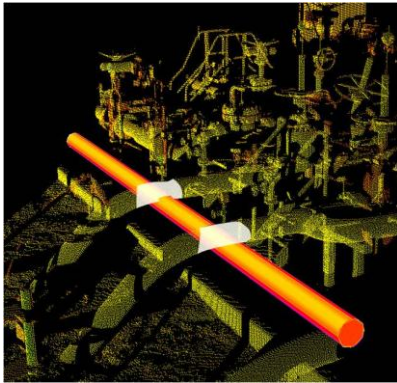
Though most users are not yet quantitatively measuring ROI, they can definitely tell that they are working more productively and effectively with BIM and have complete faith that it is a better way of working. One Owner reported 3 to 10 % cost saving and 10 to 30% schedule savings. Construction Managers have seen significant reduction in RFI's and field change orders when using 3D Model based MEP coordination. Sub-contractors are reporting all round savings from lean construction methods that BIM enables. Experienced subs have reportedly been able to shave 5% of their bid prices when BIM is used.

# Getting a running start with BIM

*BIM is a technology platform that is radically changing the way you do business.*

## **Benchmark's BIM Services**

- BIM Training & Technical Support
- BIM Contract Development
- BIM Technology Choices
- BIM Process , Procedures & Standards
- QA of BIM Design Model
- 2D Drawings to 3D Models
- Visualization Support
- Quantity Takeoff for Estimating
- Logistics & 4D Scheduling
- Sub-Contractor Scope Packaging
- MEP Coordination & Clash Detection
- BIM Lab – Hardware & Software Set Up



Benchmark Line and Grade, Inc. will help you plan and execute the implementation of BIM in your organization. We can help you assess your needs and opportunities against your current capabilities and prepare a strategic plan for BIM. We will help you assess and choose technology, get trained and working on projects. We will help you revamp your processes, procedures and standards and assist in contract development based on BIM.

We can also help you jump start a current project by developing 3D models from 2D drawings and setting up and managing 3D MEP coordination for your subs. We can assist in your marketing effort with 3D visualization and walk-thrus, help your estimators with quantity take-offs from models and help your construction team with 4D scheduling, site logistics and safety planning. We can add close out documents to the finished model.

*"There's this surge wave of interest in BIM right now. If you're not on the front end of it, you're falling far behind."*

*- Linda Morrissey, Sr Precon Mgr  
Mortenson Construction*

*- SmartMarket Report*

**Benchmark Line and Grade, Inc.**  
**551 East Putnam Avenue**  
**Cos Cob, CT. 06807**  
**Building Information Modeling**  
**In Construction**